



WELCOME & THANK YOU!!!

TRIDENT BUILDERS, the developer of the parcel known municipally as 800 Elizabeth Street (former W.T. Laing Public School) in Wallaceburg, thanks you for attending tonight's Public Information Centre (PIC) to learn of their plans to redevelop the site for new residential uses over two phases.

It is proposed that Phase One will see the construction of 16 semi-detached dwellings (32 dwelling units) with 11 dwellings (22 units) fronting on Elizabeth Street, and the remaining five dwellings (10 units) fronting on Lisgar Street. Phase Two, which will front on Elgin Street, proposes the construction of four townhouse dwellings containing 24 dwelling units. It should be noted that final phasing order is still to be confirmed.

MEETING FORMAT

1. OPENING REMARKS & INTRODUCTIONS (6:30 PM)
2. VERBAL PRESENTATION BY TRIDENT BUILDERS
3. EXPLANATION OF, AND REASONING FOR, PLANNING ACT PROCESSES REQUIRED
4. PUBLIC COMMENTS & QUESTIONS; RESPONSES
5. ADJOURNMENT (8:00 PM)

On behalf of Trident Builders, respectfully,

David French, BA, CPT
Storey Samways Planning Ltd.
55 Forest Street / Suite N / Chatham / ON / N7L 1Z9
519-354-4351 / davidf@storeysamways.ca

800 Elizabeth St
Welland, Ontario
Google
Street View Aug 2009



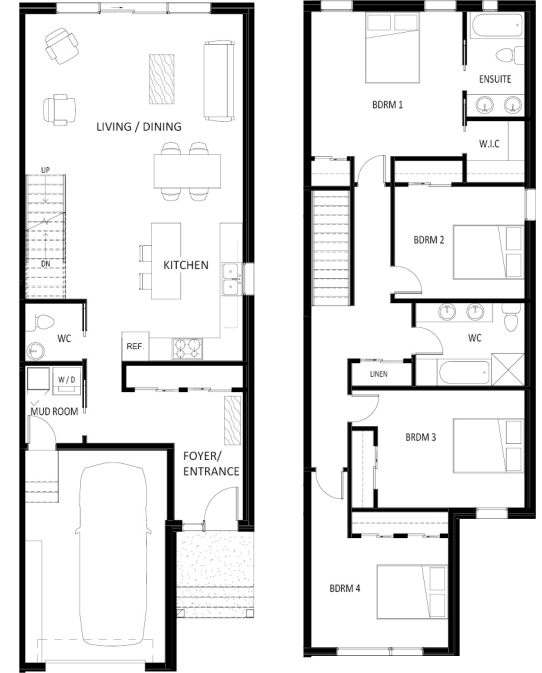




2 STORY - 1750 sq ft



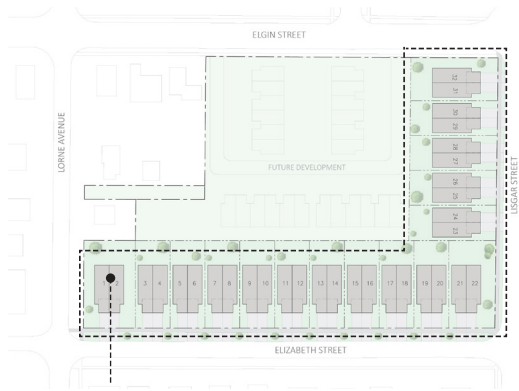
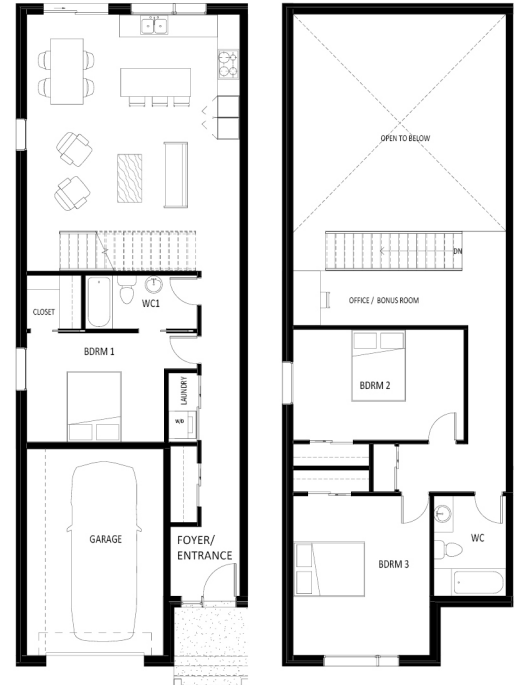
2 STORY - 2000 sq ft



1.5 STORY - 1650 sq ft



1.5 STORY 'BUNGA-LOFT' - 1700 sq ft



SEMI-DETACHED HOMES

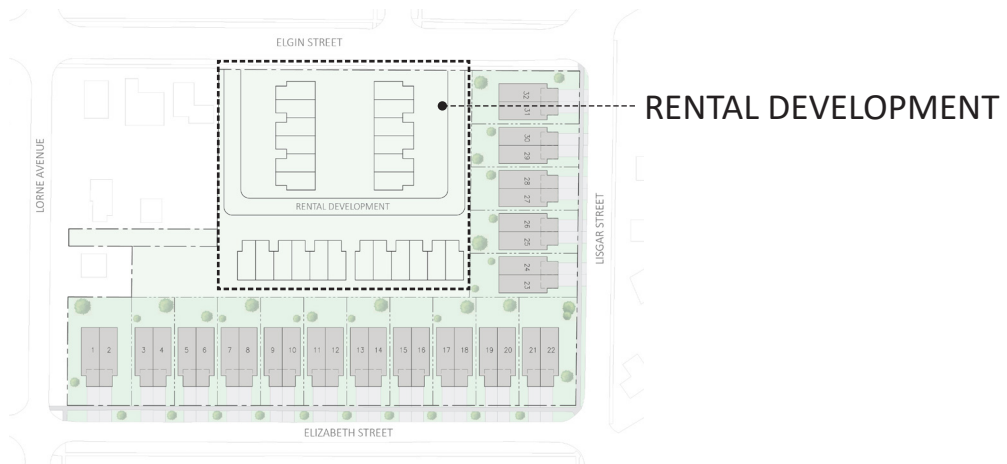




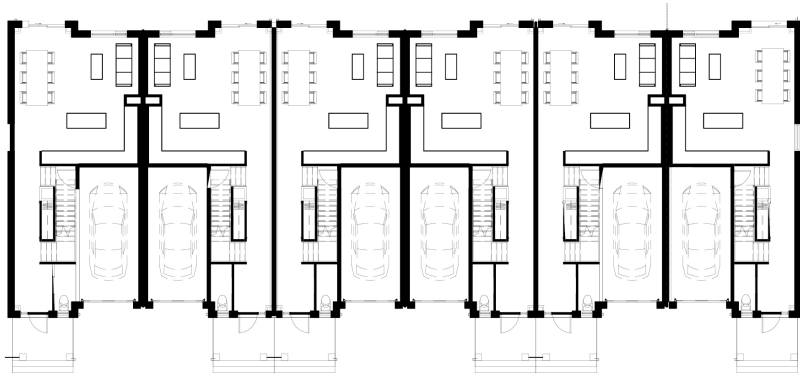
SEMI-DETACHED HOMES - Design Elevations



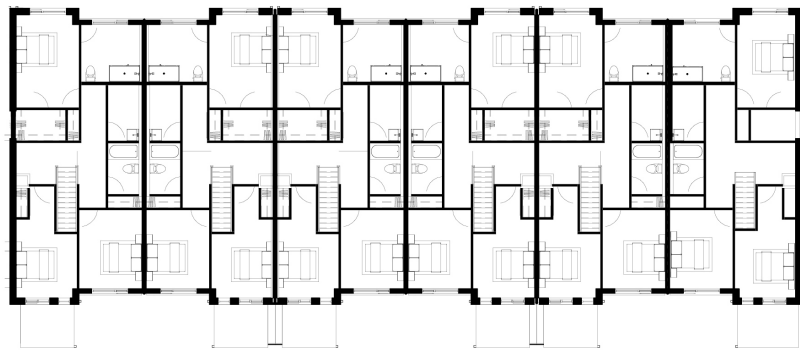
STREETSCAPE - Concept Visualization



TOWNHOUSES - 1800 sq ft



Level 1



Level 2



TOWNHOUSES - Concept Visualizations

QUESTIONS?